

1995 Boys' Sweet Sixteen Action

first round

GREENWOOD

VS.

ST. XAVIER

March 15, 1995

**Rupp Arena
Lexington, Kentucky**

OFFICIAL STATISTICS BOOKLET

OFFICIAL NFSHSA BASKETBALL BOX SCORE: *** FINAL *** Date: 03-15-95 Site: BOY'S SWEET 16, LEXINGTON

VISITORS (Last Name, First)

NO.	ST. XAVIER	Tot FG		3-POINT		FT	FTA	Rebounds			PF	TP	A	TO	BLK	S	TIME
		FG	FGA	FG	FGA			OFF	DEF	TOT							
15	MICHEL'S, ANDREW	3	7	0	0	3	5	3	2	5	4	9	2	1	0	1	21:22
21	BROWN, TIGHE	3	11	0	5	4	8	1	1	2	3	10	4	4	0	3	27:46
31	BEAN, NICK	9	12	0	0	2	4	3	6	9	2	20	2	3	4	1	29:51
11	KLEIN, KEVIN	4	10	0	1	7	9	2	5	7	2	15	2	6	0	3	30:54
23	GREEN, DAVID	5	9	2	5	5	7	1	1	3	4	17	2	4	0	2	29:57
14	EISENBACK, COREY	0	0	0	0	2	2	1	1	2	2	2	1	0	0	0	12:06
24	BOLTON, PAUL	0	1	0	1	0	0	0	0	0	0	0	0	0	0	0	2:35
30	BUEHNER, DAVID	0	0	0	0	0	0	0	0	0	0	0	0	0	0	0	2:11
22	CAMPAGNE, SHAWN	0	2	0	0	0	0	0	0	1	0	0	0	0	0	0	1:49
25	BOEHNLEIN, SCOTT	0	0	0	0	0	0	0	0	0	0	0	0	0	0	0	0:21
20	SCHEIBERT, MATT	0	0	0	0	2	2	0	0	0	0	2	0	0	0	0	0:17
32	SYMON, MATT	0	0	0	0	0	0	0	0	0	0	0	0	0	0	0	0:17
13	MATTHEWS, CHUCK	0	0	0	0	0	0	0	0	0	0	0	0	0	0	0	0:17
12	KAELIN, AARON	0	0	0	0	0	0	0	0	0	0	0	0	0	0	0	0:17
TEAM REBOUNDS (INCLUDED IN TOTALS)								1	3	4							
TOTALS		24	52	2	12	25	37	13	21	34	16	75	13	18	4	10	160
Percentages: Game				FG		24/52	46.2%	3-PT.		2/12	16.7%	FT		25/37	67.6%		
Period 1						6/14	42.9%			1/5	20.0%			2/3	66.7%		
Period 2						4/12	33.3%			0/4	0.0%			5/8	62.5%		
Period 3						9/18	50.0%			1/3	33.3%			5/6	83.3%		
Period 4						5/8	62.5%			0/0	0.0%			13/20	65.0%		

HOME (Last Name, First)

NO.	GREENWOOD	Tot FG		3-POINT		FT	FTA	Rebounds			PF	TP	A	TO	BLK	S	TIME
		FG	FGA	FG	FGA			OFF	DEF	TOT							
21	LYONS, MATT	8	11	0	0	0	0	3	5	8	3	16	0	4	1	1	27:07
43	LATHREM, JASON	7	24	2	6	3	5	5	10	15	3	19	2	4	1	5	31:43
41	MILLER, FRED	0	1	0	0	2	2	3	0	3	5	2	0	2	0	0	11:15
14	BREWER, JOHN	0	2	0	0	0	0	1	3	4	5	0	0	4	0	0	19:27
23	FISHBACK, DAY	7	14	1	5	0	0	1	2	3	4	15	6	7	0	1	31:43
31	KEES, JEREMY	2	4	0	0	1	3	0	4	4	3	5	3	0	0	0	13:41
12	HOLT, NEAL	1	4	1	1	2	2	1	0	1	4	5	0	2	0	1	15:41
32	TERRY, KEVIN	0	0	0	0	0	0	0	1	1	1	0	0	1	0	0	7:58
34	ARNOLD, JANEY	0	1	0	0	0	0	1	0	1	0	0	0	0	0	0	0:17
40	OSBOE, JASON	0	0	0	0	0	0	0	0	0	0	0	0	0	0	0	0:17
11	HERRMAN, D.J.	0	0	0	0	0	0	0	0	0	1	0	0	0	0	0	0:3
24	HOOD, TODD	0	0	0	0	0	0	0	0	0	0	0	0	0	0	0	0:17
42	HUTCHINS, ROY	0	0	0	0	0	0	0	0	0	0	0	0	0	0	0	0:3
22	COLE, GEORGE	0	0	0	0	0	0	0	0	0	0	0	0	0	0	0	0:14
30	CHEATHAM, BRENT	0	0	0	0	0	0	0	0	0	0	0	0	0	0	0	0:14
TEAM REBOUNDS (INCLUDED IN TOTALS)								1	1	1							
TOTALS		25	61	4	12	8	12	16	25	41	29	62	11	24	2	8	160
Percentages: Game				FG		25/61	41.0%	3-PT.		4/12	33.3%	FT		8/12	66.7%		
Period 1						8/16	50.0%			2/3	66.7%			0/0	0.0%		
Period 2						4/12	33.3%			2/4	50.0%			4/6	66.7%		
Period 3						4/13	30.8%			0/2	0.0%			2/3	66.7%		
Period 4						9/20	45.0%			0/3	0.0%			2/3	66.7%		

OFFICIALS: Keith Clary, Tom Hummell, Keith Hall-Alt
 Technicals: None

SCORE BY PERIODS

ST. XAVIER	15	13	24	23	=	75
GREENWOOD	18	14	10	20	=	62

Attendance: 15,175

COMMENTS: POINTS OFF TURNOVERS
 ST. XAVIER 25 GREENWOOD

SECOND CHANCE POINTS
 16 ST. XAVIER 13 GREENWOOD 12

ST. XAVIER "TIGERS" vs GREENWOOD "GATORS"
1st Half Play by Play

PAGE : 1

Tip off at 7:30 p.m. on 03/15/95 at BOY'S SWEET 16, LEXINGTON
Produced by the KHSAA SWEET 16 Stat Crew with FINAL III
Final III is a product of STONE CONSULTING SERVICE (606)273-3941

Player	Team	GREENWOOD
LYONS, MATT	LATHREM	JASON MILLER, FRED BREWER, JOHN FISHBACK, DAY.
1-1	100% 1-3	33.3% 6 ft Lane Follow by LYONS, MATT
1	1	Foul on MILLER, FRED
2	2	Player Control Foul on MILLER, FRED Sub In: KEES, JEREMY Out: MILLER, FRED
1-1	100% 2-6	33.3% Driving Dunk by FISHBACK, DAY.
1	1	Assist by KEES, JEREMY
1-4	25.0% 3-7	42.8% 4 ft Lane Turnaround by LATHREM, JASON
1	2	Assist by FISHBACK, DAY.
1	3	Foul on KEES, JEREMY
2-3	66.6% 4-9	44.4% Sub In: HOLT, NEAL Out: BREWER, JOHN 4 ft Lane Driving by LYONS, MATT
2-2	100% 5-11	45.4% 3 pt 23 ft Right Angle Jump shot by FISHBACK, DAY.
2	3	Assist by KEES, JEREMY
3-4	75.0% 6-12	50.0% Layup Off Fast Break by LYONS, MATT
1	4	Foul on HOLT, NEAL
1	5	Foul on LYONS, MATT Sub In: TERRY, KEVIN Out: LYONS, MATT
1-2	50.0% 7-14	50.0% 3 ft Lane Driving by KEES, JEREMY
1	4	Assist by LATHREM, JASON
1-1	100% 8-16	50.0% Sub In: MILLER, FRED Out: KEES, JEREMY 3 pt 22 ft Right Side Jump shot by HOLT, NEAL
2	5	Assist by FISHBACK, DAY.

Time	Score	ST. XAVIER	Player	Team
		MICHELS, ANDREW, BROWN, TIGHE, BEAN, NICK, KLEIN, KEVIN, GREEN, DAVID		
1 7:42	*2-0			
1 7:27	2-3*	3 pt 21 ft Left Angle Jump shot by GREEN, DAVID	1-1	100% 1-1 100%
		Assist by BROWN, TIGHE	1	1
1 7:10				
1 6:51		Foul on BEAN, NICK	1	1
1 6:48				
1 6:48				
1 6:38	*4-3			
1 6:10	4-5*	6 ft Lane Jump shot by BEAN, NICK	1-1	100% 2-3 66.6%
1 5:45	4-7*	Follow Tip by BEAN, NICK	2-2	100% 3-5 60.0%
1 5:31		Foul on BROWN, TIGHE	1	2
1 5:28	*6-7			
1 5:15				
1 5:15	6-8*	BEAN, NICK, 2 Free Throws made 1st missed 2nd	1-2	50.0% 1-2 50.0%
1 4:21				
1 4:21	*8-8			
1 4:08	8-10*	Layup Off Fast Break by BEAN, NICK	3-3	100% 4-8 50.0%
		Assist by KLEIN, KEVIN	1	2
1 3:17	*11-10			
1 2:58	*13-10			
1 2:47				
1 2:47		Sub In: EISENBACK, COREY Out: MICHELS, ANDREW		
1 2:36	13-12*	4 ft Lane Driving by BROWN, TIGHE	1-4	25.0% 5-11 45.4%
1 2:36				
1 2:36				
1 2:36	13-13*	BROWN, TIGHE, 1 Free Throw made	1-1	100% 2-3 66.6%
1 2:33		Foul on GREEN, DAVID	1	3
1 1:53	*15-13			
1 1:42		Sub In: BOLTON, PAUL Out: KLEIN, KEVIN		
1 1:15	15-15*	Follow Layup by BEAN, NICK	4-4	100% 6-13 46.1%
1 0:53		Subs In: KLEIN, KEVIN, MICHELS, ANDREW, BUEHNER, DAVID Out: EISENBACK, COREY, BROWN, TIGHE, GREEN, DAVID		
1 0:53				
1 0:53	*18-15			

ST. XAVIER "TIGERS" vs GREENWOOD "GATORS"
1st Half Play by Play

PAGE : 2

Tip off at 7:30 p.m. on 03/15/95 at BOY'S SWEET 16, LEXINGTON
Produced by the KHSAA SWEET 16 Stat Crew with FINAL III
Final III is a product of STONE CONSULTING SERVICE (606)273-3941

GREENWOOD				Time	Score	ST. XAVIER	Player	Team
HOLT, NEAL, TERRY, KEVIN, LATHREM, JASON, MILLER, FRED, FISHBACK, DAY.						KLEIN, KEVIN, MICHELS, ANDREW, BROWN, TIGHE, BOLTON, PAUL, BEAN, NICK		
				2 7:42		Ball to TIGERS		
				2 7:30	18-17*	Sub In: GREEN, DAVID Out: BOLTON, PAUL	2-4	50.0% 7-16 43.7%
				2 7:12		4 ft Lane Driving by GREEN, DAVID	1	4
				2 7:12		Foul on MICHELS, ANDREW		
1-2	50.0%	1-2	50.0%	2 7:12	*19-17			
				2 7:12		Sub In: CAMPAGNE, SHAW Out: BEAN, NICK		
				2 7:02	19-19*	4 ft Lane Turnaround by MICHELS, ANDREW	1-2	50.0% 8-17 47.0%
						Assist by BROWN, TIGHE	2	3
2-7	28.5%	9-17	52.9%	2 6:41	*21-19			
						Driving Layup by LATHREM, JASON		
						Assist by FISHBACK, DAY.		
						Foul on FISHBACK, DAY.		
				2 6:12				
				2 6:11		Sub In: BEAN, NICK Out: CAMPAGNE, SHAW		
				2 6:11		BROWN, TIGHE, 2 Free Throws missed both	1-3	33.3% 2-5 40.0%
				2 6:09	21-21*	10 ft Lane Follow by MICHELS, ANDREW	2-3	66.6% 9-19 47.3%
				2 6:01		Foul on MICHELS, ANDREW	2	5
				2 6:01		Sub In: EISENBACK, COREY Out: MICHELS, ANDREW		
				2 5:52				
				2 5:13	21-23*	Layup Off Fast Break by KLEIN, KEVIN	1-2	50.0% 10-20 50.0%
				2 4:26				
						REB: 11 A: 6 BLK: 1 TO: 5 PF: 6		
						S: 1 FT: 1-2 50.0% FG: 9-21 42.8%		
						No. 1 GREENWOOD TIME - O U T		
						REB: 13 A: 3 BLK: 1 TO: 6 PF: 5		
						S: 1 FT: 2-5 40.0% FG: 10-20 50.0%		
3-4	75.0%	3-4	75.0%	2 3:27		Foul on BROWN, TIGHE	2	6
				2 3:27	*23-23			
				2 3:27		Sub In: BUEHNER, DAVID Out: BROWN, TIGHE		
				2 3:27				
				2 3:13				
				2 3:12	23-25*	KLEIN, KEVIN, 2 Free Throws made both	2-2	100% 4-7 57.1%
				2 2:57	*26-25			
3-11	27.2%	10-23	43.4%	2 2:22	*29-25			
				2 2:09		Sub In: BROWN, TIGHE Out: BUEHNER, DAVID		
				2 2:09		Sub In: MICHELS, ANDREW Out: EISENBACK, COREY		
				2 2:00		Foul on MICHELS, ANDREW	3	7
				2 2:00		Sub In: CAMPAGNE, SHAW Out: MICHELS, ANDREW		
1-2	50.0%	4-6	66.6%	2 2:00	*30-25			
				2 1:12				
				2 1:12		Sub In: TERRY, KEVIN Out: LYONS, MATT		
				2 1:12	30-26*	KLEIN, KEVIN, 2 Free Throws made 1st missed 2nd	3-4	75.0% 5-9 55.5%
				2 1:12		Sub In: EISENBACK, COREY Out: CAMPAGNE, SHAW		
				2 0:46				
				2 0:46	30-28*	EISENBACK, COREY, 1 & Bonus made both	2-2	100% 7-11 63.6%
				2 0:36	*32-28			
3-6	50.0%	12-26	46.1%	2 0:00				
				2 0:00		7 ft Lane Driving by FISHBACK, DAY.		
4-13	30.7%	12-27	44.4%	2 0:00		3 pt 21 ft Right Angle Jump shot by LATHREM, JASON, missed		
				2 0:00		Rebound by BREWER, JOHN		
0-1	Tot-1	0-1	Tot-18	2 0:00		3 ft Lane Follow by BREWER, JOHN, missed		
0-1	00.0%	12-28	42.8%	2 0:00				
				2 0:00		Rebound by GREEN, DAVID	D-1	Tot-1 D-1 Tot-17

OFFICIAL NFSHSA BASKETBALL BOX SCORE: * OFFICIAL FIRST HALF *
 Date: 03-15-95 Site: BOY'S SWEET 16, LEXINGTON

VISITORS (Last Name, First)

NO.	ST. XAVIER	Tot FG		3-POINT		FT	FTA	Rebounds			PF	TP	A	TO	BLK	S	TIME				
		FG	FGA	FG	FGA			OFF	DEF	TOT											
15	MICHEL'S, ANDREW	2	3	0	0	0	0	1	1	2	3	4	0	0	0	0	8:14				
21	BROWN, TIGHE	1	6	0	3	1	3	0	1	1	2	3	2	0	0	1	13:49				
31	BEAN, NICK	4	5	0	0	1	2	2	2	4	1	9	0	2	2	0	14:59				
11	KLEYN, KEVIN	1	3	0	1	3	4	0	2	2	0	5	1	4	0	0	15:11				
23	GREEN, DAVID	2	6	1	4	0	0	1	1	2	1	5	0	2	0	0	14:49				
14	EISENBACK, COREY	0	0	0	0	2	2	0	1	1	0	2	0	0	0	0	6:58				
24	BOLTON, PAUL	0	1	0	1	0	0	0	0	0	0	0	0	0	0	0	2:00				
30	BUEHNER, DAVID	0	0	0	0	0	0	0	0	0	0	0	0	0	0	0	2:11				
22	CAMPAGNE, SHAWN	0	2	0	0	0	0	1	0	1	0	0	0	0	0	0	1:49				
TEAM REBOUNDS (INCLUDED IN TOTALS)																					
TOTALS		10	26	1	9	7	11	6	11	17	7	28	3	8	2	1	80				
Percentages:		HALF		FG		10/26		38.5%		3-PT.		1/9		11.1%		FT		7/11		63.6%	
Period 1						6/14		42.9%				1/5		20.0%				2/3		66.7%	
Period 2						4/12		33.3%				0/4		0.0%				5/8		62.5%	

HOME (Last Name, First)

NO.	GREENWOOD	Tot FG		3-POINT		FT	FTA	Rebounds			PF	TP	A	TO	BLK	S	TIME				
		FG	FGA	FG	FGA			OFF	DEF	TOT											
21	LYONS, MATT	3	4	0	0	0	0	1	3	4	2	6	0	0	1	0	11:24				
43	LATHREM, JASON	4	13	2	4	3	4	1	4	5	1	13	1	3	0	1	16:00				
41	MILLER, FRED	0	0	0	0	0	0	1	0	1	2	0	0	2	0	0	6:38				
14	BREWER, JOHN	0	1	0	0	0	0	1	2	3	1	0	0	0	0	0	9:31				
23	FISHBACK, DAY	3	6	1	2	0	0	0	1	1	1	7	4	1	0	0	16:00				
31	KEES, JEREMY	1	2	0	0	1	2	0	2	2	1	3	2	0	0	0	9:22				
12	HOLY, NEAL	1	2	1	1	0	0	0	0	0	1	3	0	0	0	0	6:29				
32	TERRY, KEVIN	0	0	0	0	0	0	0	1	1	0	0	0	1	0	0	4:36				
TEAM REBOUNDS (INCLUDED IN TOTALS)																					
TOTALS		12	28	4	7	4	6	5	13	18	9	32	7	7	1	1	80				
Percentages:		HALF		FG		12/28		42.9%		3-PT.		4/7		57.1%		FT		4/6		66.7%	
Period 1						8/16		50.0%				2/3		66.7%				0/0		0.0%	
Period 2						4/12		33.3%				2/4		50.0%				4/6		66.7%	

OFFICIALS: Keith Clary, Tom Hummell, Keith Hall-Alt
 Technicals: None

SCORE BY PERIODS

ST. XAVIER	15	13	=	28
GREENWOOD	18	14	=	32

Attendance: 15,175

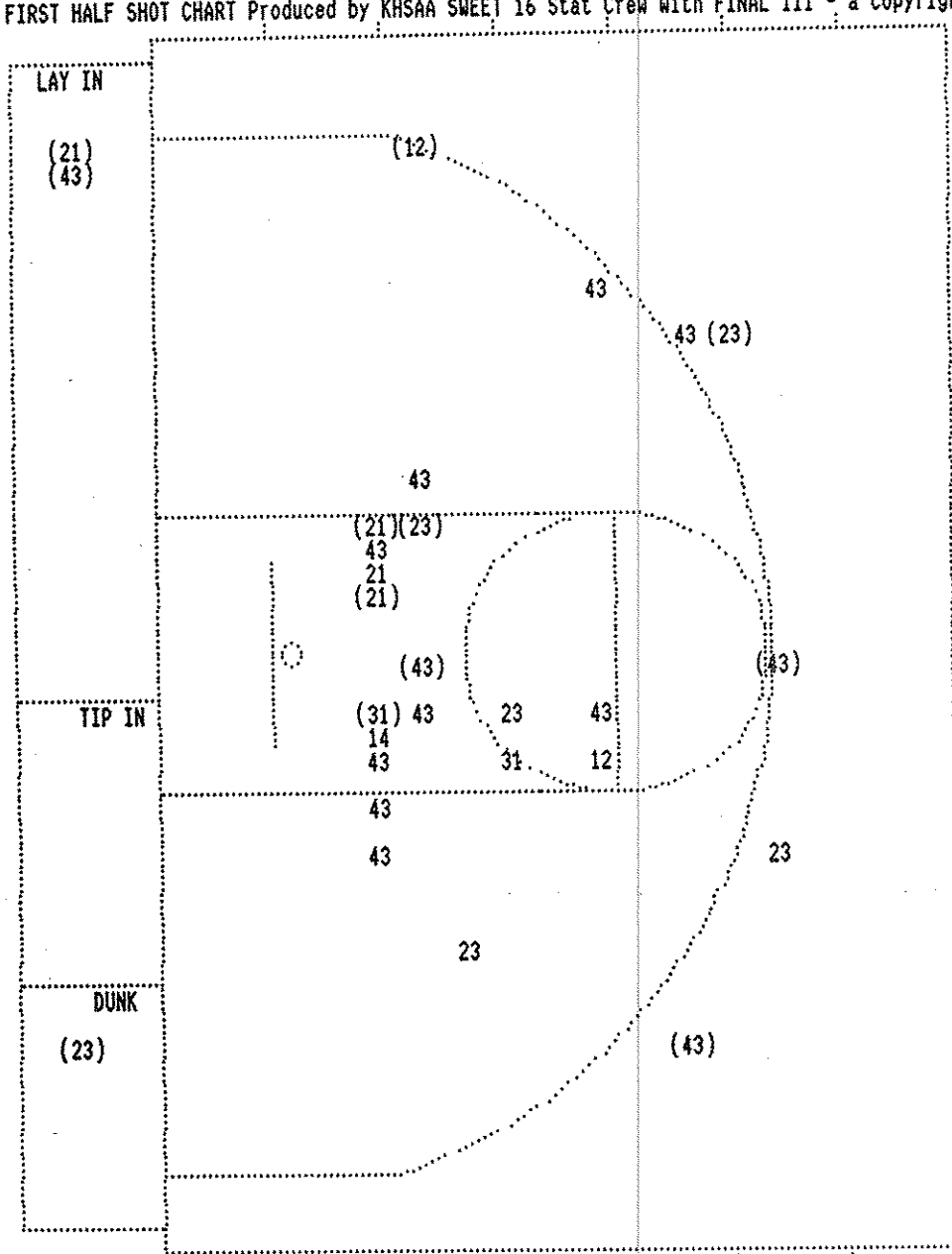
COMMENTS: POINTS OFF TURNOVERS

ST. XAVIER 6 GREENWOOD

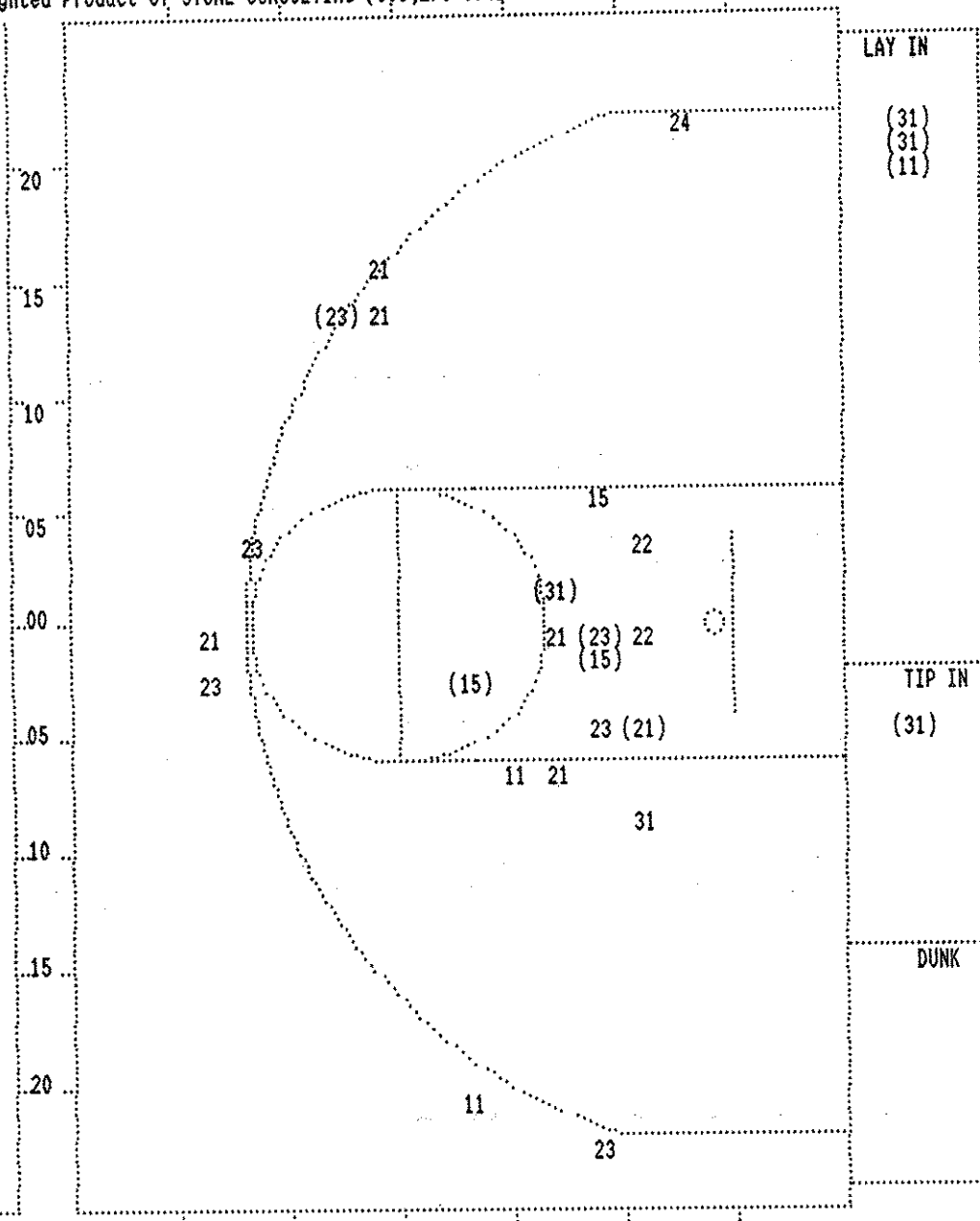
SECOND CHANCE POINTS

8 ST. XAVIER 8 GREENWOOD

2



Player	1-9 Ft	10-15 Ft	Over 15 Ft	3 Pointers	Total
21 - LYONS, NAT	3 / 4	75.0%	31 - KEES, JERE	1 / 2	50.0%
43 - LATHREM, J	4 / 13	30.7%			
14 - BREWER, JO	0 / 1	0.0%			
23 - FISHBACK,	3 / 6	50.0%			
12 - HOLT, NEAL	1 / 2	50.0%			
Layups	3 / 3	5 / 15	0 / 3	4 / 7	12 / 28



Player	1-9 Ft	10-15 Ft	Over 15 Ft	3 Pointers	Total
15 - MICHELS, A	2 / 3	66.6%	22 - CAMPAGNE,	0 / 2	0.0%
21 - BROWN, TIG	1 / 6	16.6%	24 - BOLTON, PA	0 / 1	0.0%
31 - BEAN, NICK	4 / 5	80.0%			
11 - KLEIN, KEV	1 / 3	33.3%			
23 - GREEN, DAV	2 / 6	33.3%			
Layups	4 / 4	4 / 11	1 / 2	1 / 9	10 / 26

Player	Team	GREENWOOD	Time	Score	ST. XAVIER	Player	Team
LYONS, MATT, LATHREM, JASON		MILLER, FRED, BREWER, JOHN, FISHBACK, DAY.			MICHELS, ANDREW, BROWN, TIGHE, BEAN, NICK, KLEIN, KEVIN, GREEN, DAVID		
2	1	Foul on FISHBACK, DAY.	3 7:38		Ball to TIGERS	5-6	83.3% 11-28 39.2%
2-2	100% 6-8	75.0% MILLER, FRED, 2 Free Throws made both	3 7:30	32-30*	6 ft Lane Turnaround by BEAN, NICK	1	4
			3 7:13		Assist by MICHELS, ANDREW	2	1
			3 7:13	*34-30	Foul on GREEN, DAVID		
			3 6:57	34-33*	3 pt 22 ft Left Side Jump shot by GREEN, DAVID	3-7	42.8% 12-29 41.3%
					Assist by BROWN, TIGHE	3	5
3	2	Foul on MILLER, FRED	3 6:05			2-6	33.3% 13-32 40.6%
			3 5:35	34-35*	Layup Off Fast Break by KLEIN, KEVIN	1	6
					Assist by BEAN, NICK		
			3 5:21	34-37*	Layup Off Fast Break by KLEIN, KEVIN	3-7	42.8% 14-33 42.4%
			3 5:19				
		REB: 23 A: 7 BLK: 1 TO: 9 PF: 2 S: 1 FT: 6-8 75.0% FG: 12-33 36.3%	No. 1 GREENWOOD	T I M E - O U T	REB: 20 A: 6 BLK: 2 TO: 8 PF: 1 S: 2 FT: 7-11 63.6% FG: 14-33 42.4%		
4-6	66.6% 13-36	36.1% 6 ft Lane Follow by LYONS, MATT	3 5:19			2	2
2		Foul on HOLT, NEAL	3 5:02		Foul on BEAN, NICK		
		Sub In: KEES, JEREMY Out: MILLER, FRED	3 4:56	*36-37			
			3 4:38				
			3 4:38				
5-7	71.4% 14-37	37.8% Layup Off Fast Break by LYONS, MATT	3 4:38	36-38*	MICHELS, ANDREW, 2 Free Throws missed 1st made 2nd	1-2	50.0% 8-13 61.5%
3		Assist by KEES, JEREMY	3 4:23	*38-38			
			3 4:18	38-40*	4 ft Lane Jump shot by BEAN, NICK	6-8	75.0% 15-36 41.6%
					Assist by GREEN, DAVID	1	7
3	4	Foul on HOLT, NEAL	3 4:10				
			3 4:00	38-42*	Driving Layup by GREEN, DAVID	4-8	50.0% 16-37 43.2%
4-9	44.4% 15-40	37.5% Follow Layup by FISHBACK, DAY.	3 3:44	*40-42		1	3
			3 3:37		Player Control Foul on KLEIN, KEVIN		
			3 3:37		Sub In: EISENBACK, COREY Out: MICHELS, ANDREW		
2	5	Foul on KEES, JEREMY	3 3:12				
3	6	Foul on KEES, JEREMY	3 2:54				
		Sub In: BREWER, JOHN Out: HOLT, NEAL	3 2:54				
			3 2:54	40-44*	BROWN, TIGHE, 2 Free Throws made both	3-5	60.0% 10-15 66.6%
			3 2:54		Sub In: MICHELS, ANDREW Out: BROWN, TIGHE		
			3 2:43		Foul on KLEIN, KEVIN	2	4
			3 2:29		Foul on EISENBACK, COREY	1	5
			3 2:29		Sub In: BROWN, TIGHE Out: BEAN, NICK		
			3 1:47	40-46*	Driving Layup by BROWN, TIGHE	2-9	22.2% 17-40 42.5%
					Assist by EISENBACK, COREY	1	8
			3 1:38				
		REB: 25 A: 8 BLK: 1 TO: 13 PF: 6 S: 3 FT: 6-8 75.0% FG: 15-40 37.5%	No. 2 GREENWOOD	T I M E - O U T	REB: 25 A: 8 BLK: 2 TO: 11 PF: 5 S: 4 FT: 10-15 66.6% FG: 17-40 42.5%		
			3 1:38		Sub In: BEAN, NICK Out: EISENBACK, COREY		
			3 1:38				
			3 1:38				
3	7	Player Control Foul on FISHBACK, DAY.	3 1:27				
4	8	Foul on MILLER, FRED	3 1:19				
			3 1:19				
		REB: 25 A: 8 BLK: 1 TO: 14 PF: 8 S: 3 FT: 6-8 75.0% FG: 15-40 37.5%	T I M E - O U T	ST. XAVIER No. 1	REB: 25 A: 8 BLK: 2 TO: 11 PF: 5 S: 4 FT: 10-15 66.6% FG: 17-40 42.5%		
		Sub In: KEES, JEREMY Out: MILLER, FRED	3 1:19				
			3 1:19	40-48*	GREEN, DAVID, 2 Free Throws made both	2-2	100% 12-17 70.5%

2nd Half Play by Play (continued)

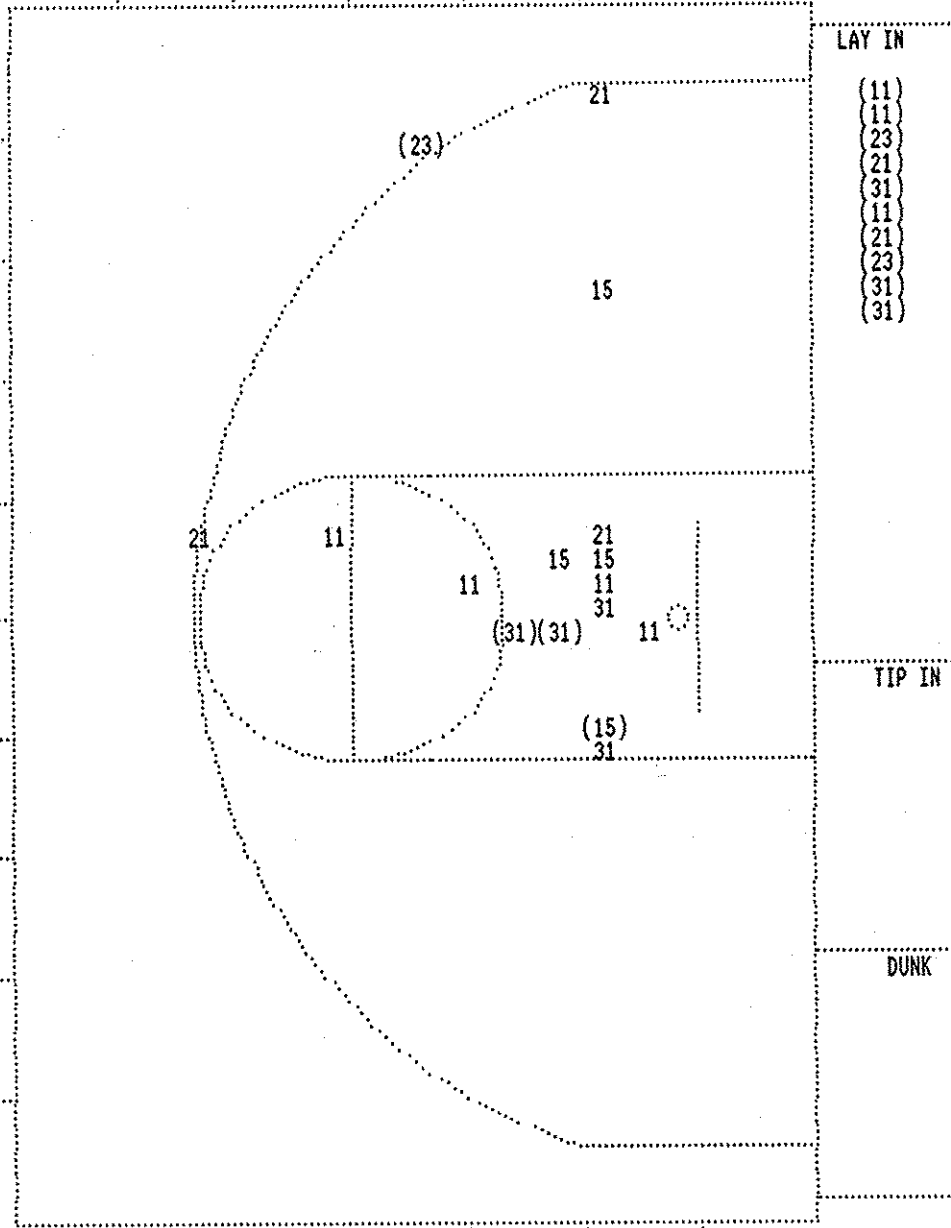
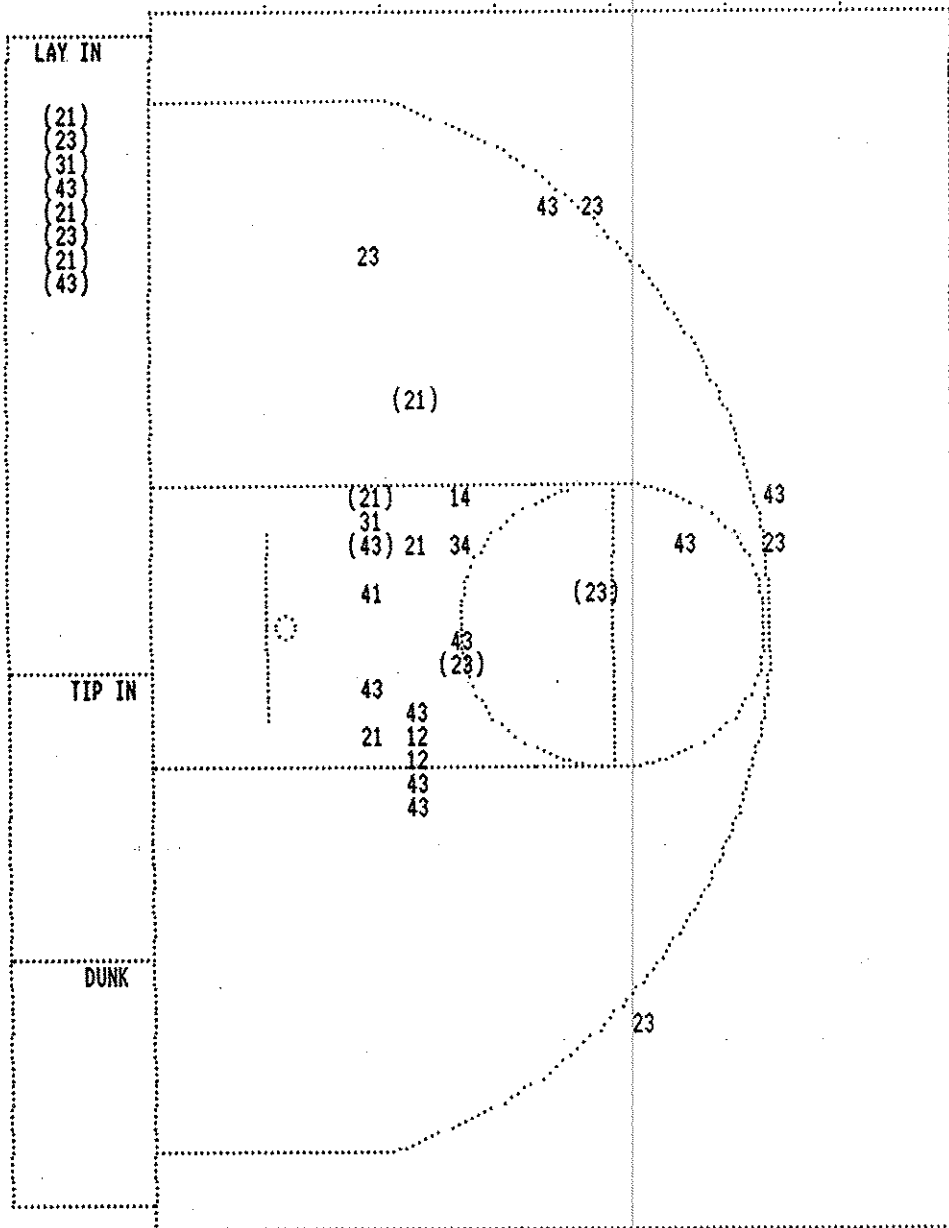
Player	Team	GREENWOOD
2-4	50.0%	16-41 39.0%
5		9
Layup Off Fast Break by KEES, JEREMY		
Assist by FISHBACK, DAY.		
1-3	33.3%	6-9 66.6%
KEES, JEREMY, 1 & Bonus missed 1st		

Time	Score	ST. XAVIER	Player	Team
3 1:06		Foul on GREEN, DAVID	3	6
3 1:06		Sub In: BOLTON, PAUL Out: GREEN, DAVID		
3 1:01	40-50*	Layup Off Fast Break by BEAN, NICK	7-9	77.7% 18-41 43.9%
		Assist by KLEIN, KEVIN	2	9
3 0:52	*42-50			
3 0:31		Foul on BROWN, TIGHE	3	7
3 0:31		Sub In: EISENBACK, COREY Out: MICHELS, ANDREW		
3 0:31		Sub In: GREEN, DAVID Out: BOLTON, PAUL		
3 0:31				
3 0:02	42-52*	Layup Off Fast Break by KLEIN, KEVIN	4-8	50.0% 19-44 43.1%
		Assist by BEAN, NICK	2	10

Player	Team	GREENWOOD	Time	Score	ST. XAVIER	Player	Team
LYONS, MATT	LATHREM, JASON	MILLER, FRED, BREWER, JOHN, FISHBACK, DAY.			KLEIN, KEVIN, EISENBACK, COREY, BROWN, TIGHE, GREEN, DAVID, BEAN, NICK		
4	9	Ball to GATORS Foul on FISHBACK, DAY.	4 7:52				
5-10	50.0% 17-42 40.4%	12 ft Lane Jump shot by FISHBACK, DAY.	4 7:52 42-53*	GREEN, DAVID, 1 Free Throw made	3-3	100%	13-18 72.2%
5	10	Foul on MILLER, FRED Sub In: HOLT, NEAL Out: MILLER, FRED	4 7:51	GREEN, DAVID, 1 Free Throw missed	3-4	75.0%	13-19 68.4%
2	11	Foul on BREWER, JOHN Sub In: TERRY, KEVIN Out: BREWER, JOHN	4 7:19 *44-53				
6-8	75.0% 18-43 41.8%	11 ft Right Side Jump shot by LYONS, MATT	4 7:04 44-55*	Driving Layup by BROWN, TIGHE	3-11	27.2%	20-45 44.4%
2-2	100% 8-11 72.7%	HOLT, NEAL, 1 & Bonus made both	4 7:04				
1	12	Foul on TERRY, KEVIN Sub In: BREWER, JOHN Out: TERRY, KEVIN	4 7:04	BROWN, TIGHE, 1 Free Throw missed	3-6	50.0%	13-20 65.0%
2	13	Foul on LATHREM, JASON	4 6:43	Sub In: MICHELS, ANDREW Out: BROWN, TIGHE			
6-12	50.0% 19-47 40.4%	6 ft Lane Jump shot by FISHBACK, DAY.	4 6:43				
3	14	Foul on LYONS, MATT	4 6:43	Sub In: MICHELS, ANDREW Out: BROWN, TIGHE			
3-5	60.0% 8-12 66.6%	LATHREM, JASON, 1 & Bonus missed 1st	4 6:43 44-57*	GREEN, DAVID, 2 Free Throws made both	5-6	83.3%	15-22 68.1%
5-19	26.3% 20-51 39.2%	Follow Layup by LATHREM, JASON	4 6:37 *46-57				
7-9	77.7% 21-52 40.3%	Layup Off Fast Break by LYONS, MATT	4 5:36 46-59*	Driving Layup by GREEN, DAVID	5-9	55.5%	21-48 43.7%
4	15	Foul on HOLT, NEAL	4 5:22	Foul on EISENBACK, COREY	2		8
7-14	50.0% 22-53 41.5%	Layup Off Fast Break by FISHBACK, DAY.	4 5:22 *48-59	Sub In: BROWN, TIGHE Out: EISENBACK, COREY			
2	10	Assist by LATHREM, JASON	4 5:14 48-61*	4 ft Lane Bank by MICHELS, ANDREW	3-7	42.8%	22-49 44.8%
6-20	30.0% 23-54 42.5%	4 ft Lane Jump shot by LATHREM, JASON	4 5:03	Assist by GREEN, DAVID	2		11
6	11	Assist by FISHBACK, DAY.	4 5:03				
3	16	Foul on BREWER, JOHN	4 4:08 48-63*	Layup Off Fast Break by BEAN, NICK	1-3	33.3%	15-23 65.2%
4	17	Foul on BREWER, JOHN	4 3:44	Assist by MICHELS, ANDREW	8-11	72.7%	23-51 45.0%
8-10	80.0% 24-56 42.8%	Layup Off Fast Break by LYONS, MATT	4 3:44 48-65*		2		12
			4 3:35 *50-65				
			4 3:26				
			4 3:26 50-66*	BEAN, NICK, 2 Free Throws made 1st missed 2nd	2-4	50.0%	18-27 66.6%
			4 3:13	Foul on MICHELS, ANDREW	4		9
			4 3:13				
			4 2:57 50-68*	Driving Layup by BEAN, NICK	9-12	75.0%	24-52 46.1%
			4 2:40 *52-68	Assist by BROWN, TIGHE	4		13
			4 2:38				
			No. 3 GREENWOOD T I M E - O U T				
				REB: 32 A: 13 BLK: 4 TO: 14 PF: 9			
				S: 9 FT: 18-27 66.6% FG: 24-52 46.1%			
			4 2:19 *54-68				
			4 2:15				
			4 2:15	KLEIN, KEVIN, 1 & Bonus missed 1st	5-7	71.4%	18-28 64.2%
			4 2:05 *56-68				
			4 1:51 *58-68				
			4 1:43				
			4 1:43 58-69*	BROWN, TIGHE, 1 & Bonus made 1st missed 2nd	4-8	50.0%	19-30 63.3%
			4 1:14				
			4 1:13	GREEN, DAVID, 1 & Bonus missed 1st	5-7	71.4%	19-31 61.2%
			4 1:08 *60-69				
			4 1:01				
			T I M E - O U T ST. XAVIER No. 2				
				REB: 33 A: 13 BLK: 4 TO: 18 PF: 9			
				S: 10 FT: 19-31 61.2% FG: 24-52 46.1%			
			4 0:49				
				REB: 34 A: 13 BLK: 4 TO: 18 PF: 9			

2nd Half Play by Play (continued)

GREENWOOD				ST. XAVIER		Player	Team
Player	Team		Time	Score			
3	18	Foul on LATHREM, JASON	4 0:41				
7-24	29.1%	Follow Layup by LATHREM, JASON	4 0:41	60-71*	KLEIN, KEVIN, 1 & Bonus made both	7-9	77.7% 21-33 63.6%
5	19	Foul on BREWER, JOHN	4 0:26	*62-71			
		Sub In: TERRY, KEVIN Out: BREWER, JOHN	4 0:21				
			4 0:21				
			4 0:21	62-73*	MICHELS, ANDREW, 1 & Bonus made both	3-5	60.0% 23-35 65.7%
			4 0:21		Sub In: BOEHNLEIN, SCOTT Out: MICHELS, ANDREW		
			4 0:17		Subs In: SCHEIBERT, MATT, SIMON, MATT, MATTHEWS, CHUCK, Kaelin, AARON		
					Out: KLEIN, KEVIN, BROWN, TIGHE, GREEN, DAVID, BEAN, NICK		
		Subs In: ARNOLD, JAMEY, OSBOE, JASON, HERRMAN, D.J., HOOD, TODD,	4 0:17				
		HUTCHINS, ROY					
		Out: HOLT, NEAL, LYONS, MATT, FISHBACK, DAY., TERRY, KEVIN,					
		LATHREM, JASON					
1	20	Foul on HERRMAN, D.J.	4 0:14				
		Sub In: COLE, GEORGE Out: HERRMAN, D.J.	4 0:14				
		Sub In: CHEATHAM, BREN Out: HUTCHINS, ROY	4 0:14				
			4 0:14	62-75*	SCHEIBERT, MATT, 1 & Bonus made both	2-2	100% 25-37 67.5%
0-1	00.0%	7 ft Lane Jump shot by ARNOLD, JAMEY, missed	4 0:00				
0-1	Tot-1	Rebound by ARNOLD, JAMEY	4 0:00				



GREENWOOD					
Player			Player		
21 - LYONS, NAT	5/7	71.4%	12 - HOLT, NEAL	0/2	0.0%
43 - LATHREM, J	3/11	27.2%	31 - KEES, JERE	1/2	50.0%
41 - MILLER, FR	0/1	0.0%	34 - ARNOLD, JA	0/1	0.0%
14 - BREWER, JO	0/1	0.0%			
23 - FISHBACK,	4/8	50.0%			
Layups	1-9 Ft	10-15 Ft	Over 15 Ft	3 Pointers	Total
8 / 8	3 / 16	2 / 2	0 / 2	0 / 5	13 / 33
100.0%	18.8%	100.0%	0.0%	0.0%	39.4%

ST. XAVIER					
Player			Player		
15 - MICHELS, A	1/4	25.0%			
21 - BROWN, TIG	2/5	40.0%			
31 - BEAN, NICK	5/7	71.4%			
11 - KLEIN, KEV	3/7	42.8%			
23 - GREEN, DAV	3/3	100.0%			
Layups	1-9 Ft	10-15 Ft	Over 15 Ft	3 Pointers	Total
10 / 10	3 / 11	0 / 2	1 / 3	14 / 26	
100.0%	27.3%	0.0%	33.3%	53.8%	